

OPENBARE RUIMTE DE WETERING LOON OP ZAND

19 MAART 2024



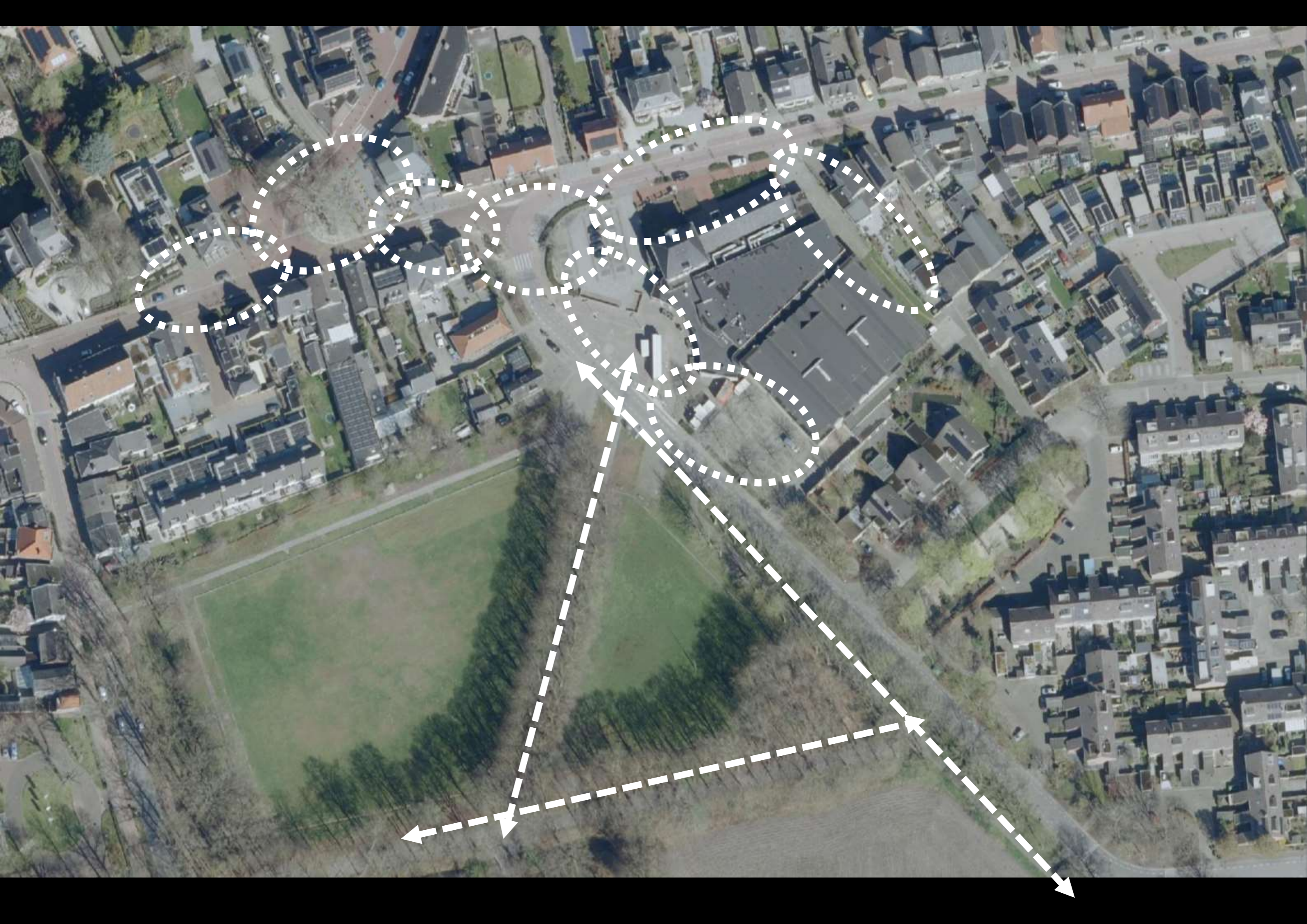


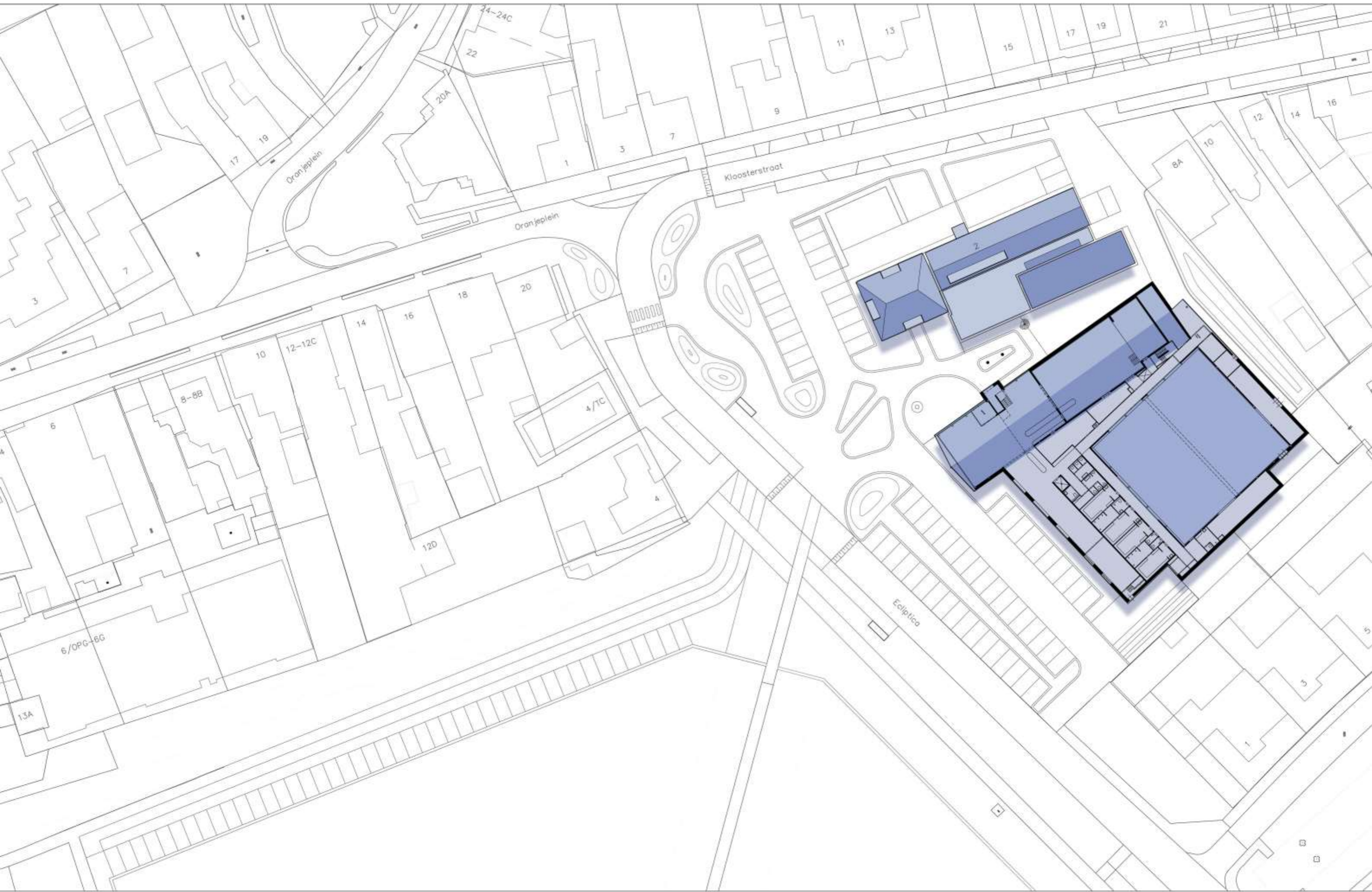


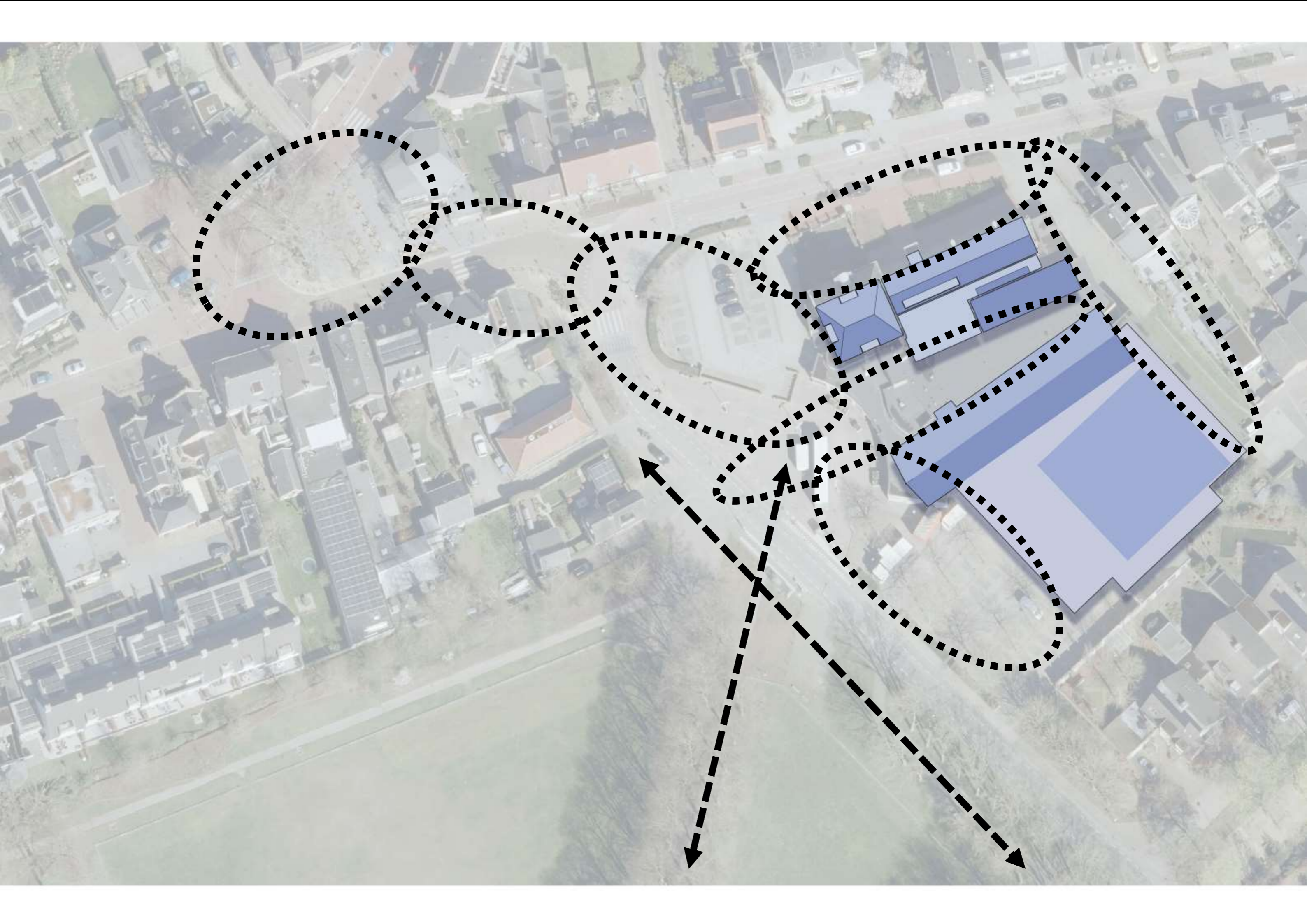










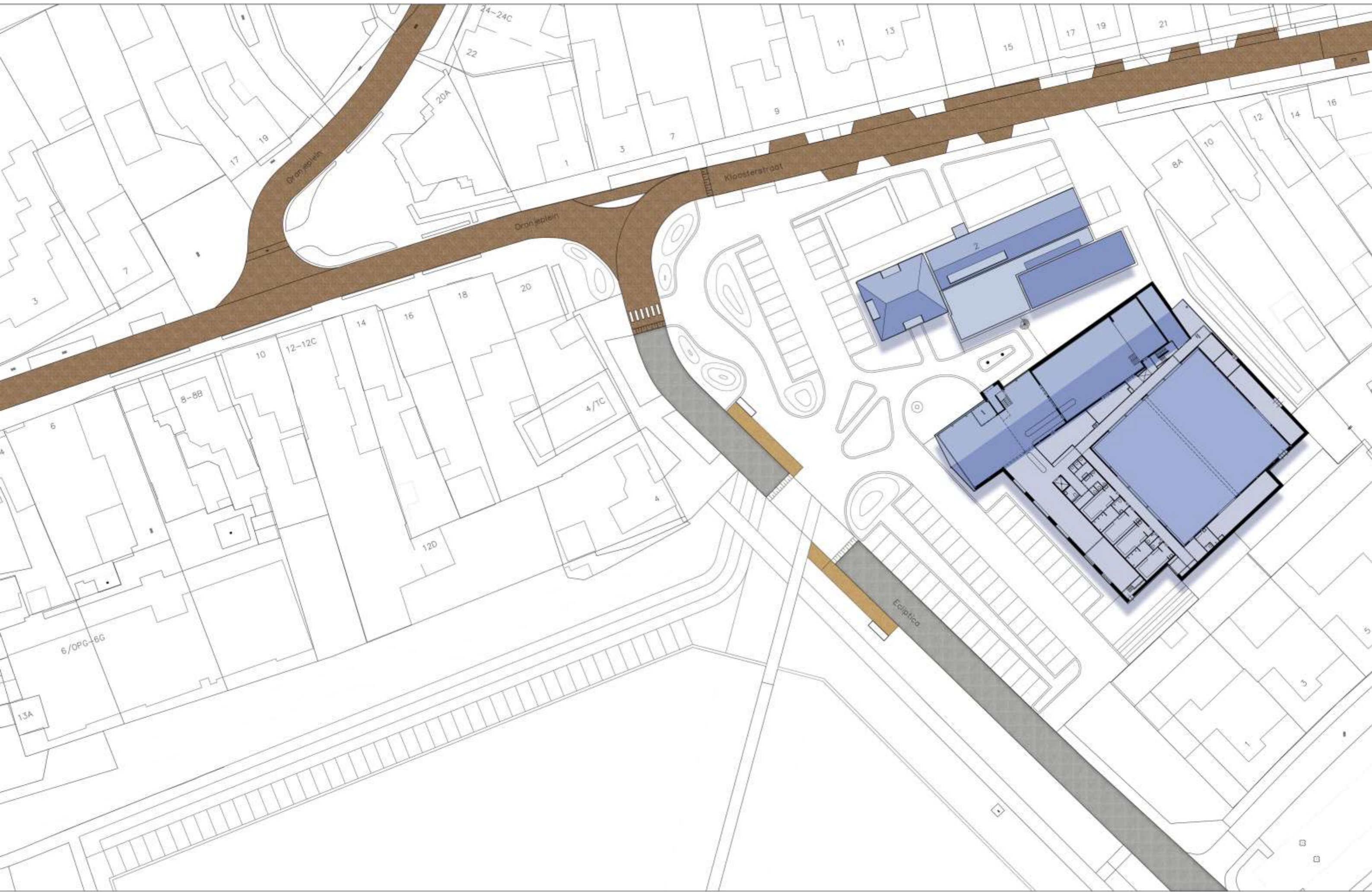


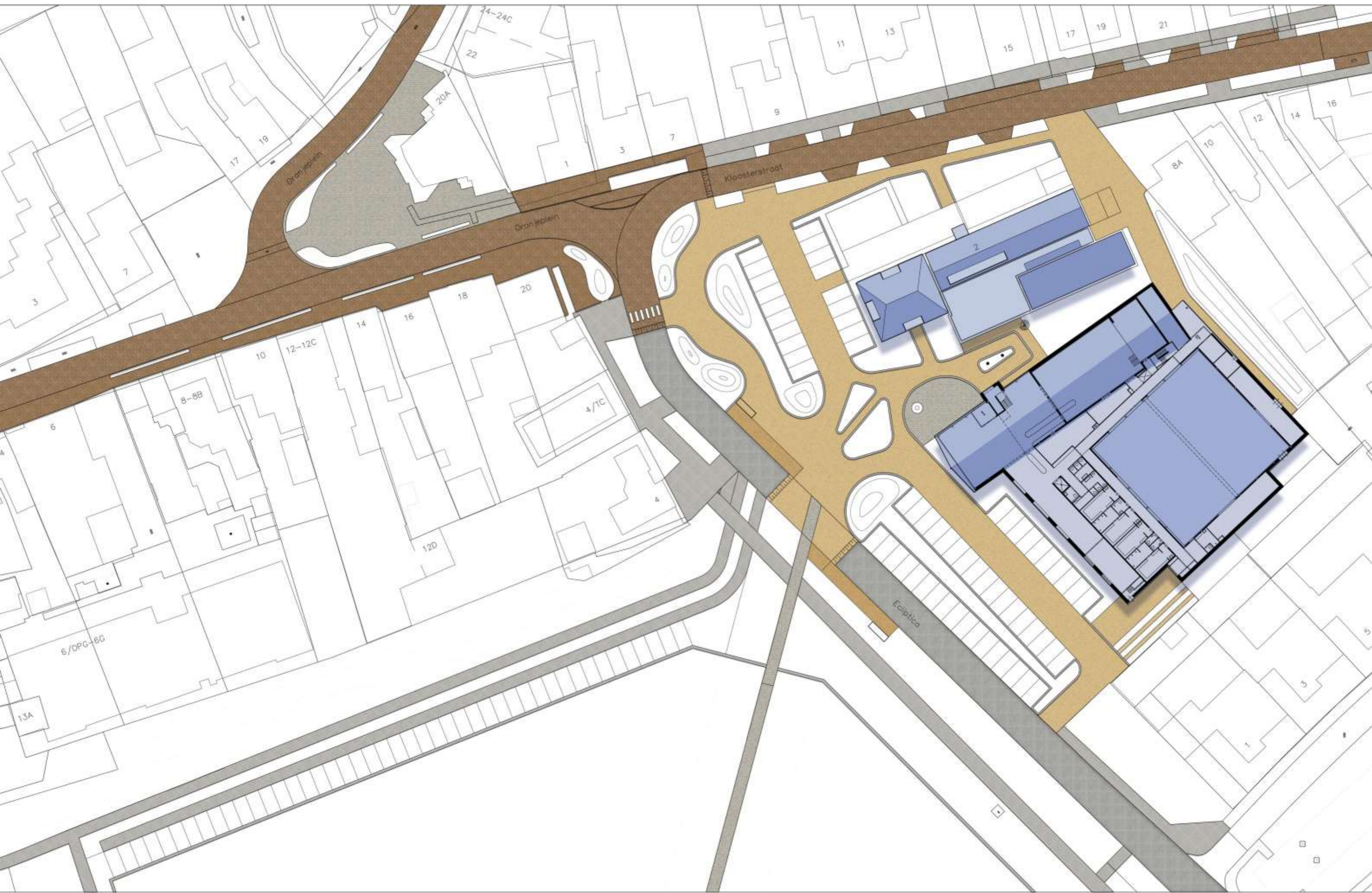




An aerial architectural rendering of a university campus. The scene features a central courtyard with a large, modern building that has a prominent glass facade and a gabled roof. To the left, there are several traditional brick buildings with gabled roofs. The courtyard is surrounded by paved walkways, green spaces with trees, and parking areas with several cars. The overall atmosphere is bright and clear, suggesting a sunny day. The word "INFRASTRUCTUUR" is overlaid in large, white, bold, sans-serif capital letters across the center of the image.

INFRASTRUCTUUR









Huidig aantal parkeerplaatsen bij het dorpshuis en klooster:
57 pp. (inclusief 4x parkeren aan de Kloosterstraat)

Ontworpen parkeerplaatsen bij het dorpshuis en klooster:
71 pp.

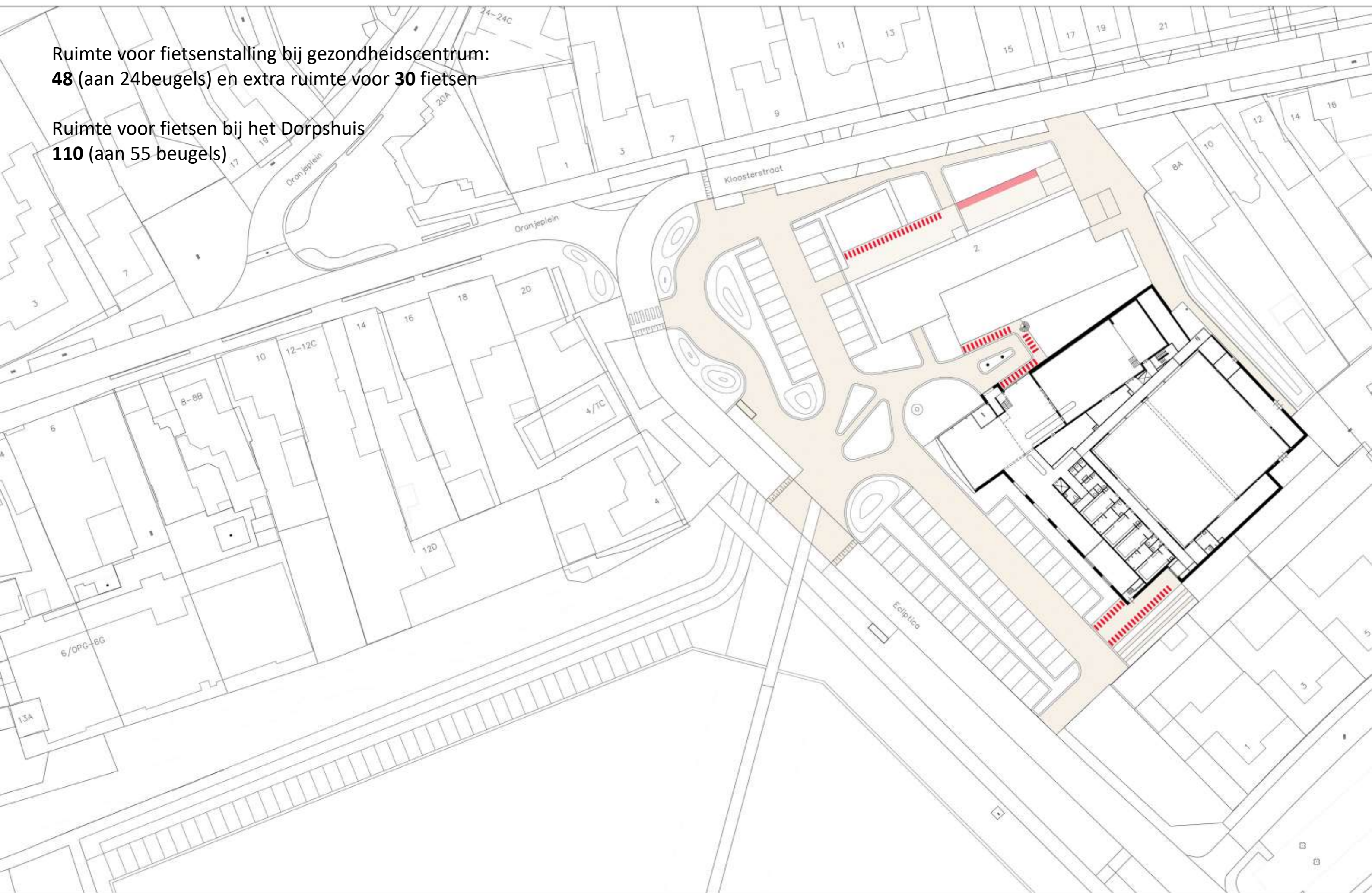
Er is tevens onderzocht hoe mogelijk extra capaciteit voor
(grasparkeren) aan de rand van het Kasteelveld ingepast zou
kunnen worden (*).





Ruimte voor fietsenstalling bij gezondheidscentrum:
48 (aan 24beugels) en extra ruimte voor **30** fietsen

Ruimte voor fietsen bij het Dorpshuis
110 (aan 55 beugels)



An aerial architectural rendering of a campus. The central focus is a large, modern building with a prominent glass facade and a gabled roof. To its left is a smaller brick building with a gabled roof. The surrounding area includes various other buildings, parking lots with several cars, and a network of pedestrian paths and roads. The scene is filled with lush green trees and vegetation, emphasizing a 'green' or sustainable environment. The overall lighting is soft, suggesting a late afternoon or early morning setting.

GROENSTRUCTUUR

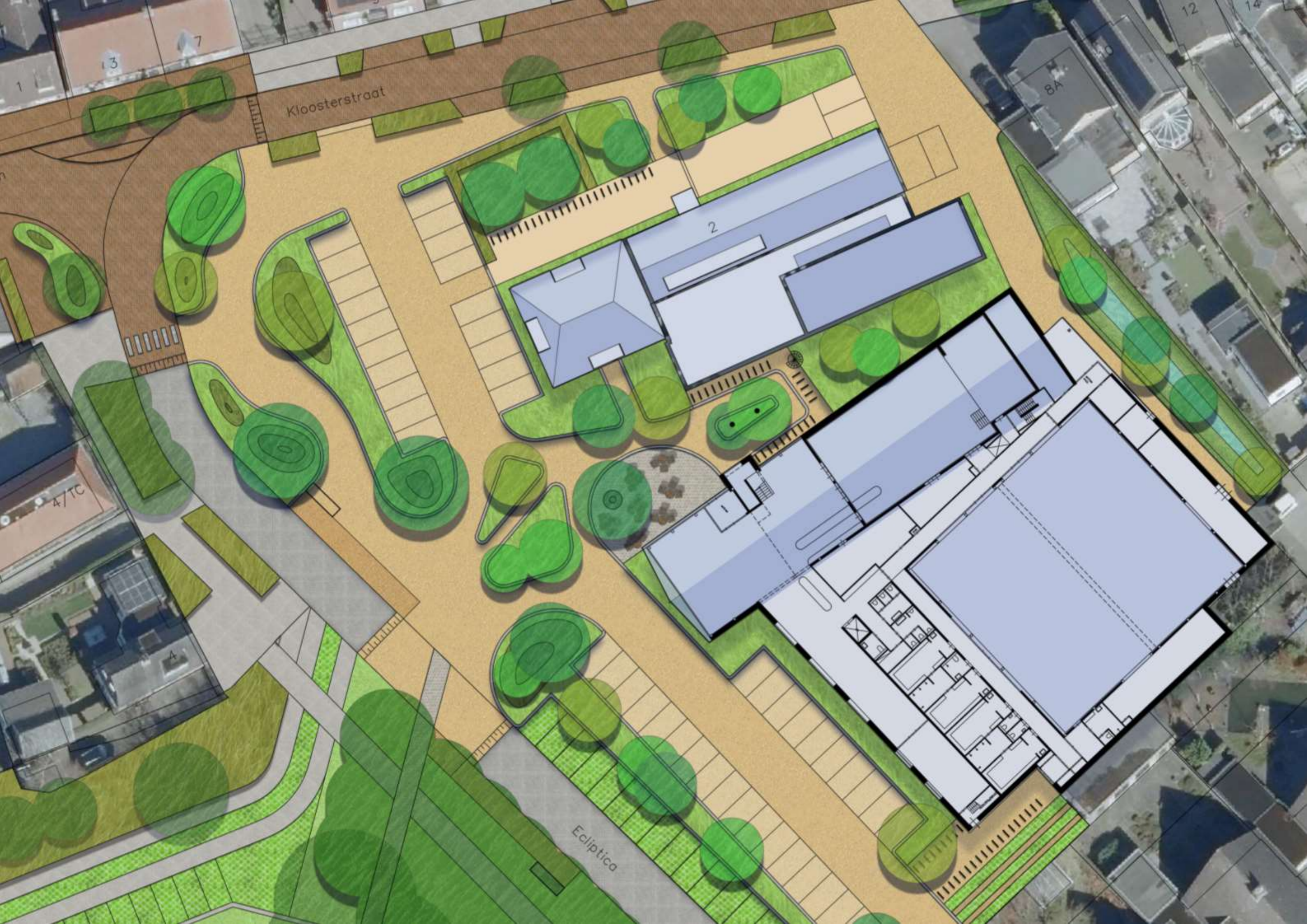












Kloosterstraat

2

Ecliptica

13

7

1

8A

12

14

4/TC

4











DORPSHUIS





DORPSHUIS

3d beeld entree en terras